

# OPERATION MANUAL

## Battery Installation

### COVER / HANDGUARD

LCK Series



Press the button & Detach the cover.



Connect the battery. Attach the cover by reversed steps.

PP-19-01



Press the button & Open the cover.



Connect the battery. Attach the cover by reversed steps.

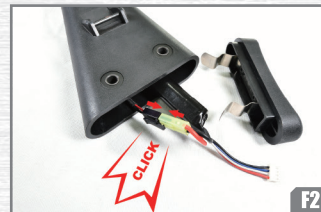
## Battery Installation

### FIXED STOCK

LC-3



Pull and detach the Butt plate.



Connect a battery. Attach butt plate by reversed steps.

LCK Series



Remove screws & detach the Butt plate.



Connect a battery. Attach butt plate by reversed steps.

LR16



Press the latch & open the lid.

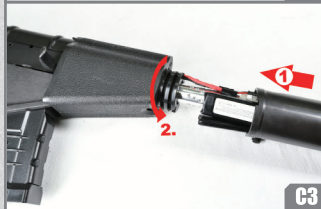


Connect and put a battery into the stock. Close the lid.

VSS / VAL



Press the button(1) & Rotate the Handguard (2) then forward remove it.



Connect a battery. Attach the handguard by steps.

L4



Push the handguard ring backward and remove lower handguard.

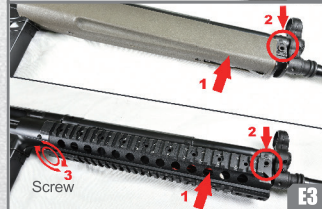
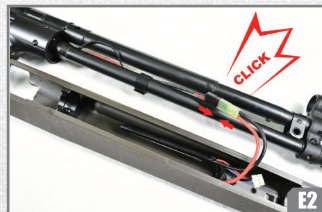


Connect a battery. Attach the handguard by steps.

LC-3



Remove the locking pin of handguard.



Connect the battery. Attach the handguard by steps.

## Battery Installation

### RETRACTABLE STOCK

LTS Keymod



Make the stock fully collapsed. Press the button and open the butt plate.



Connect and put a battery into the stock. Close the butt plate.

L4



Pinch lugs of the butt plate. Push out the butt plate then detach it.

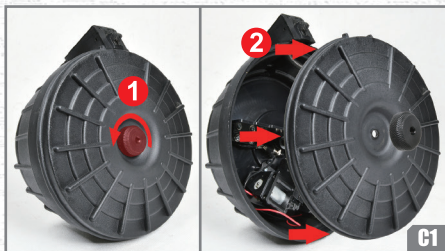


Connect and put a battery into the stock. Close the butt plate.



# OPERATION MANUAL

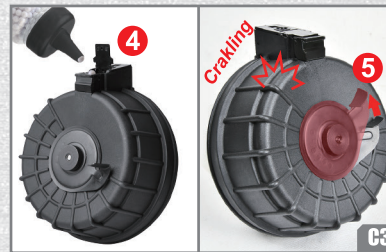
## DRUM MAG. Load BBs



Loosen the fixing screw to open the butt plate.



Install 3 AA alkaline batteries into the battery box. Turn the power switch ON. Put the butt plate back and fix the screw.

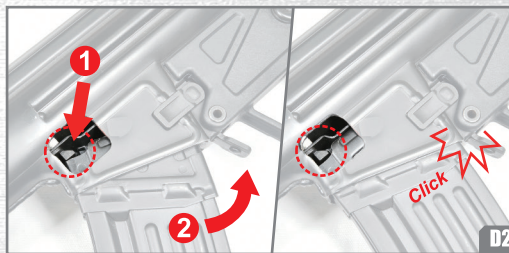


Load BBs from top cover. Wind the loading lever in front of magazine until hearing crackling sound.

## Load / Unload Magazine



Tilt and insert the hook into the magazine socket. (show as red arrows)



Let a magazine be attached with the magazine release lever (step 2) until set firmly.



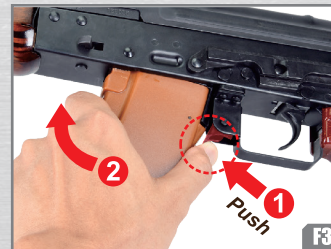
Hold the magazine, push the magazine release lever(A) or press the button(B) for unloading.



Tilt and insert the hook into the magazine socket. (show as red arrows)



Let a magazine be attached with the magazine release lever (step 2) until set firmly.



Hold the magazine, push the magazine release lever(step 1) for unloading.



L4 / LR16 Series



F1:  
Insert a magazine into the magwell until set firmly.

F2:  
Press the release button for unloading.



1 Safety ON  
2 Single  
3 Full Auto

## MAGAZINE Load BBs



Using a BB loader(excluded) to fill in the mid-cap magazine.



Open the magazine top lid and fill in BBs. Make sure the cover firmly closed before winding. Wind the ratchet (One way) at the bottom of magazine until hearing crackling sound.

## Fire Selector



1 Safety ON 2 Full Auto 3 Single

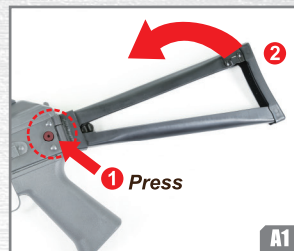


# OPERATION MANUAL

## Folding Stock

LEFT

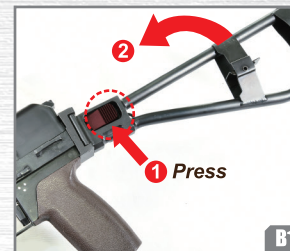
Compatible Type



Press the stock release button.



Fold the stock to left side of receiver.



Press the stock release button.



Fold the stock to left side of receiver.

RIGHT

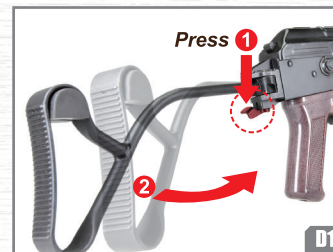
Compatible Type



Press whole stock downward.



Fold the stock to right side of receiver.



Press the stock release lever downward.



Fold the stock to right side of receiver.

BOTTOM

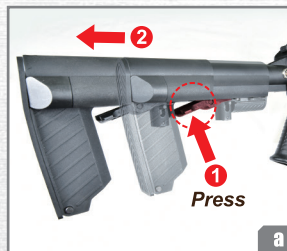


Detach a magazine first. Press the stock release button.

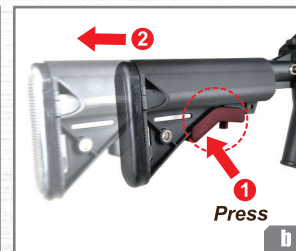


Fold the stock to the bottom of receiver.

## Retractable Stock



Press or turn the stock adjustment lever, make the stock be extended or collapsed.



TOP



Press the stock release button. Fold the stock to the top of receiver until it's locked.

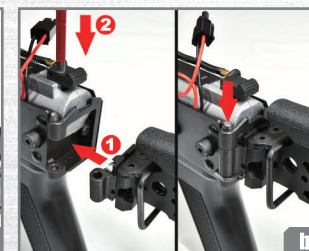


Push back the stock release button. Unfold the stock until it's locked.

## Stock Modularize



Detach the top cover and stock pin from the receiver. Put another stock module into the stock socket. Attach the stock pin with receiver by hammers or other proper tools.



Check more modularize videos from LCTairsoft YouTube Channel

